



Solutions for:

The Mining Industry

WHY

LGG Industrial?

Some of North America's Largest Mines Trust LGG Industrial with Their Business.



Provide In-Depth Technical Knowledge of Our Products and Applications to Deliver You a Unique Market Advantage.

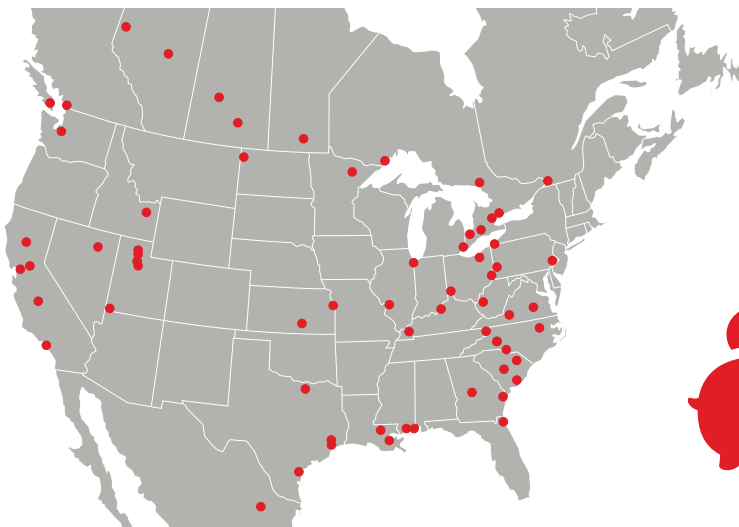


Deliver Complete System Engineered Solutions From the Most Reputable Manufacturers, Provide High-Performance Alternatives, Repair and Reclamation Services.

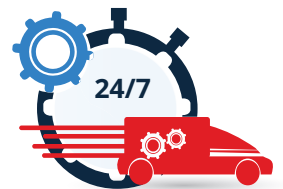


We Have the Industry Specific Knowledge and Experience to Offer More than Just Products; We Provide Assembly, Installation, Maintenance and Repair Services to Increase Uptime and Productivity. Our Longtime Tenured Specialists Have Proven that They Can Solve Your Problems Before They Become Emergencies.

This Proactive Service is Backed by Our North American Geographic Footprint

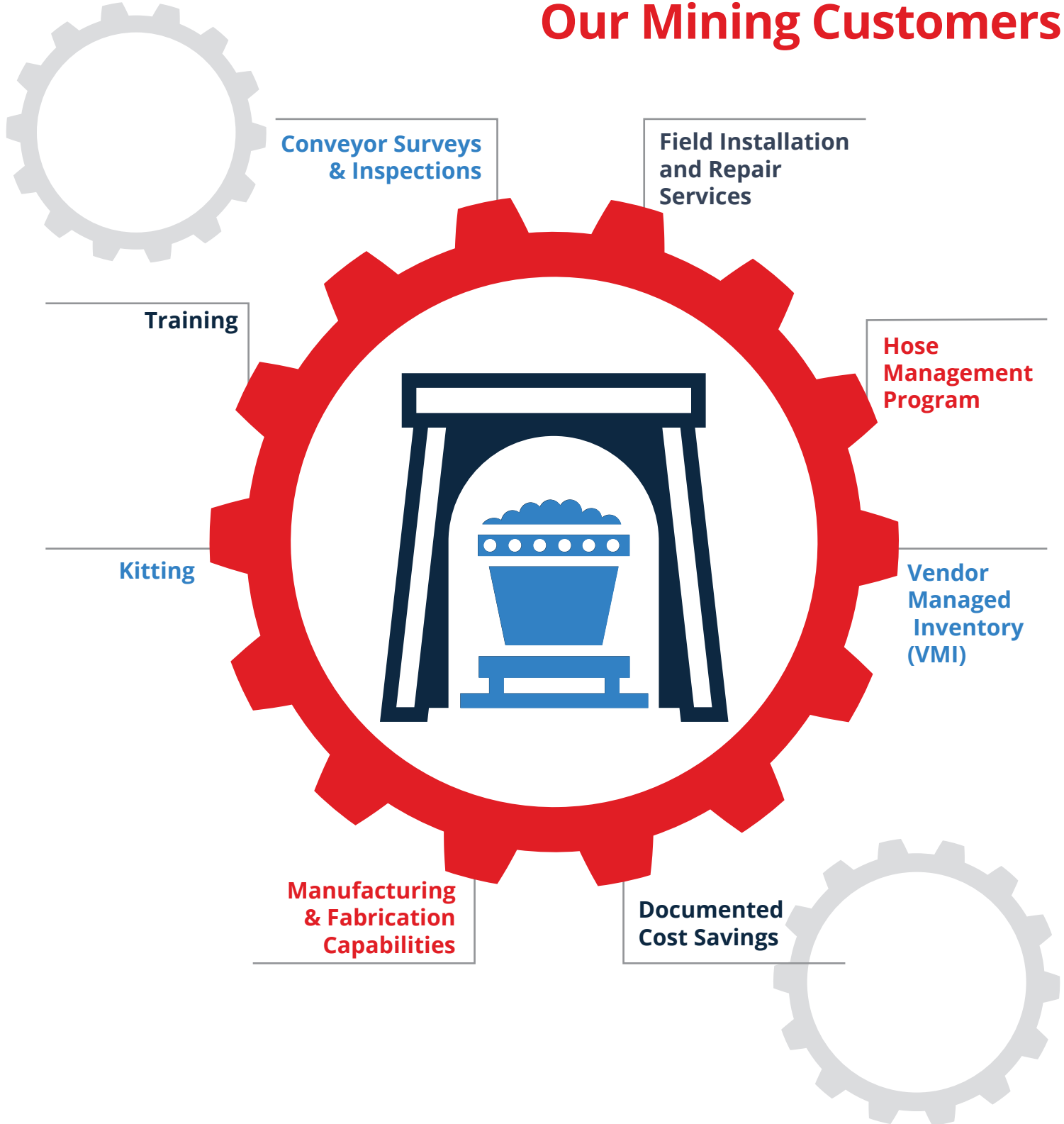


Allows Us to Provide 24/7 On-Site Diagnostic and Preventive Service, Local Inventory and Emergency Response.



Our Solutions Have Allowed Us to Document Savings Over the Last Five Years to Our Mining Customers in the Amount of **\$14 Million Dollars**





Value Added Solutions That We Provide to Our Mining Customers



Our service portfolio is designed to significantly reduce our customers' total cost of ownership.

Industrial Hose Products

Rubber Hose

SUPER MINE KING II	I.D.	W.P.	Temp.	Application
N4000 	3/4" - 2"	475-550 psi	-40°F to +200°F	<ul style="list-style-type: none"> • Air & water general purpose • Heavy-duty construction • Kink resistant
SUPER HARDROK II	I.D.	W.P.	Temp.	Application
N3000 	2"	900 psi	-40°F to +268°F	<ul style="list-style-type: none"> • Heavy-duty and high-pressure compressed air hose for use in mines, quarries and construction jobs • Special heavy-duty construction with superior flexibility and kink resistance • Excellent in bull air line service • Ideal for the safe transfer of high-temperature air • May also be used as a very robust oil transfer hose
DEFENDER	I.D.	W.P.	Temp.	Application
N1460 	2" - 4"	400-550 psi	-40°F to +180°F	<ul style="list-style-type: none"> • Medium-duty compressed air hose for use in construction sites • Ideal for the transfer of high-temperature air • May be used as a water transfer hose
KEMFLEX	I.D.	W.P.	Temp.	Application
N2700 	1/2" - 4"	200-250 psi	-40°F to +212°F	<ul style="list-style-type: none"> • Developed for use in chemical plants, or ship, barge and tank truck service • Braided construction is flexible and resistant to kinking • Can be open end steam cleaned (max 30 minutes at 266°F)

INFERNO	I.D.	W.P.	Temp.	Application
N2711	½" - 3"	250 psi	-40°F to +450°F	<ul style="list-style-type: none"> Developed for use in construction chemical and petroleum industries Best value in terms of performance relative to price Easy identification by its red cover and yellow mylar stripe Can also be used as a hot water transfer hose High-pressure steam hose for saturated steam at 450°F



SULFUR DIOXIDE DISCHARGE HOSE	I.D.	W.P.	Temp.	Application
N2683	1" - 2"	250 psi	-40°F to +180°F	<ul style="list-style-type: none"> Specifically designed for sulfur dioxide wet service 100% concentration



ROCK BREAKER	I.D.	W.P.	Temp.	Application
N2705	1" - 2"	400 psi	-40°F to +200°F	<ul style="list-style-type: none"> Heavy-duty multi-purpose air hose for use in industrial, construction and mining applications Extremely Flexible and kink-resistant




N2705C	I.D.	W.P.	Temp.	Application
N2705C	½" - 4"	400 psi	-40°F to +158°F	<ul style="list-style-type: none"> Multi-purpose air hose for use in industrial, construction and mining applications. Extremely flexible Kink resistant




Industrial Hose Products

Rubber Hose


GOODFLEX S1242	I.D.	W.P.	Temp.	Application
<p>S1242</p> 	2" – 14"	150 psi	-40°F to +160°F	<ul style="list-style-type: none"> For suction and discharge of highly abrasive materials such as slurries, dry materials, and fly ash in cement plants, power plants, construction sites, coal mines, and many other industries Uses externally attached, reusable, field attachable flanged ends that provide full unrestricted flow for higher product volume delivery and elimination of internal fitting wear issues
PETROLEUM TANK TRUCK HOSE	I.D.	W.P.	Temp.	Application
	1" – 6"	150 psi	-40°F to +176°F	<ul style="list-style-type: none"> Very flexible and lightweight hose for use in tank truck and other general industrial fluid transfer operations. Suction and delivery hose for hydrocarbon fuels and mineral oils having an aromatic content of maximum 55% by volume Classification grade Ω/T : ideal for applications in which an electrical static charge can occur, the static charge can be safely conducted through the conductive hose wall (attention: the installation must be grounded) In accordance with EN1761:1999 (with special modified wall thickness of the hose)
ALLIGATOR N645	I.D.	W.P.	Temp.	Application
<p>N645</p> 	1" – 8"	150 psi	-22°F to +212°F	<ul style="list-style-type: none"> Suction and delivery hose for water: sea water, wastewater, etc. Also suitable for mud, mild chemicals and fertilizer solutions in general industrial and agricultural applications The special construction of the hose makes it very light, extremely flexible and easy to handle. Classification Grade Ω/T

RUBBER WATER DISCHARGE N325	I.D.	W.P.	Temp.	Application
N325 	1" – 10"	100 – 300 psi	-22°F to +180°F	<ul style="list-style-type: none"> General purpose water discharge hose for in-plant water service in general industrial and agricultural applications. Also suitable for air service. Flexible and easy to handle

Composite Hose

STANDARD CHEMICAL SERVICE HOSE	I.D.	W.P.	Temp.	Application
	1" – 10"	200 - 250 psi	-40°F to +212°F	<ul style="list-style-type: none"> Specifically designed for in-plant liquid transfer operations as well as tank truck delivery and rail car loading Constructed with multiple plies of polypropylene films and polyester vapor barriers Rated for full vacuum

Metal Hose Products

FURNACE DOOR HOSE	I.D.	W.P.	Temp.	Application
	1.5"	250 psi	Various Heat Shielding Material such as Aramid (600 °F External Temperature) and Fiberglass (1000 °F External Temperature)	<ul style="list-style-type: none"> Primarily used as a water coolant hose for furnace doors Specifically engineered for demanding environments such as steel mills, glassworks, and other high-heat operations. Offers exceptional resistance to radiant heat, open flames, and splashes of molten metal. Additional Option: 304 SS Braid for Molten Splatter Protection; Fry Sil Fire Jacket for Flame & Molten Splatter Protection.



LGG Industrial can fabricate metal hoses to accommodate your custom application requirements, including:

- C276
- Monel
- Inconel
- 316L/304 Stainless Steel

Industrial Hose Products

Metal Hose Products

Comprehensive Welding Program

We have the most comprehensive welding program in the industry that was created in partnership with metallurgists, inspectors, and subject matter experts in the chemical manufacturing industry. This partnership has created a proprietary fabrication and inspection process that increases mechanical integrity, reduces risk, and creates a lower total cost of ownership.

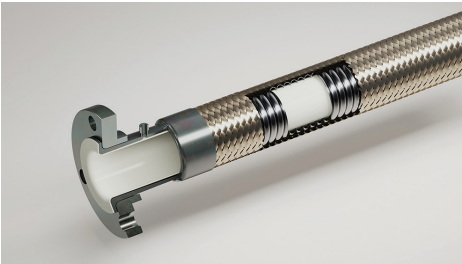
ASME B31.3 Section IX Qualified

Our welders are ASME B31.3 Section IX qualified and maintain welding logs. This log helps us maintain the 5% random radiography requirement set-fourth within our industry.

PTFE Hose

PTFE is highly chemical-resistant, and we have the capabilities to fabricate flare thru PTFE hose in-house. We can flare thru the end fittings of a hose to create a seamless PTFE layer for ultimate chemical compatibility. This is necessary in applications where corrosion of metals is likely. We can fabricate these hoses with rubber covers or utilize a variety of braid types:

- Polyvinylidene Fluoride (PVDF)
- Polypropylene (PP)
- Stainless Steel
- Monel
- C276



Industrial Hose Accessories

FloMax Fuel Nozzles

FloMax diesel fuel nozzles are specialized high-flow nozzles designed for the on-site refueling of large equipment in industries like construction, mining, and agriculture.



MannTek Dry Disconnects

Designed for the quick and spill free connection and disconnection of hoses and pipelines. Dixon MannTek Dry Disconnect Couplings transfer liquids and gases in an economical, safe, and environmentally friendly way.



Rapp-It Pipe Repair Kit

Reduce costly downtime with Rapp-It, the ultimate pipe repair system. No mixing or measuring required. Rapp-It sets rock hard in 30 minutes and can even be applied underwater.



Hydraulic Hose Products

Hydraulic Hose, Fittings, and Adapters

LGG Industrial offers a wide range of hydraulic hose and fittings to cover every field application requirement including:

- SAE100R13:** 1/4" – 2", four or six spiral. High-pressure hydraulic hose. Working pressures to 5,100 psi.
- SAE100R2AT:** 1/4" – 2", two wire braids. High-pressure hydraulic hose. Working pressures to 6,500 to psi.
- SAE100R5:** 1/4" – 2-1/2", one wire braid. Working pressures to 3,000 psi. Polyester braided cover.
- SAE100R16:** 1/4" – 2", two wire braids. High-pressure hydraulic hose. Working pressures to 6,500 psi. Exceeds EN requirements at half (1/2) the bend radius.
- 2SN:** 1/4" – 2" (EN 853) two wire braids. High-pressure hydraulic hose. Working pressures to 6,500 psi.
- SAE100R12:** 1/4" – 2" inch, four spiral. High-pressure hydraulic hose. Working pressures to 6,500 psi.
- Fittings:** The full range of JIC, male pipe, code 61, and code 62, as well as other high-pressure hydraulic hose fittings.

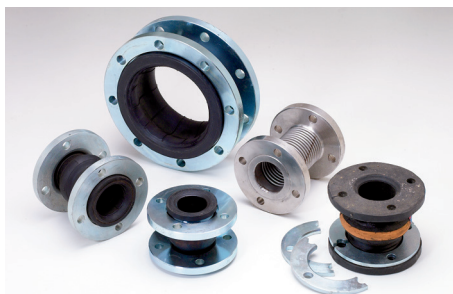


Hydraulic Crimpers and Accessories

LGG Industrial has a full crimper program available along with a full range of accessories including crimpers, dies, pumps, hose racks, hose saws, die racks, and much more.



Expansion Joints



LGG Industrial provides the chemical industry with a full range of expansion joint types, including PTFE, metal, rubber, and fabric. We work closely with the industry's largest and highest-quality expansion joint suppliers, which allows us to meet any expansion joint requirement.



PTFE Expansion Joints

Our extensive range of molded PTFE joints and PTFE-lined rubber joints cater to diverse piping applications, offering exceptional resistance to chemicals and high temperatures.



Rubber Expansion Joints

LGG Industrial provides everything from standard-size piping joints to custom sizes, lengths, offsets, and angles to meet unique piping configuration needs.



Metal Expansion Joints

Our expertise extends from standard stainless steel piping joints to highly engineered solutions utilizing exotic metals and custom hardware, ensuring optimal performance in even the most demanding applications.



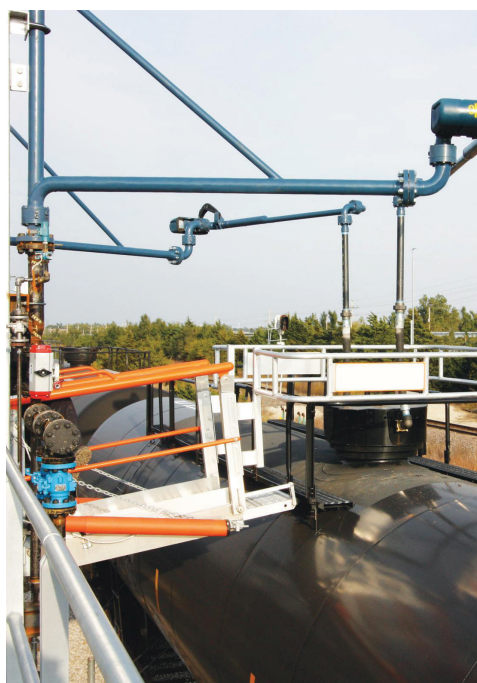
Fabric Duct Joints

We offer a wide range of Fabric Duct Joints designed to withstand extreme temperatures and address unique ducting challenges.

Loading Arms

We can supply a full line of loading arms and accessories including:

- A-Frame Loading Arms
- Counterweight Loading Arms
- Fixed Reach Horizontal Loading Arms
- Horizontal Hose Loader
- Scissor Style Loading Arms
- Telescoping Loading Arms
- Unsupported Boom Style Loading Arms
- Swivel Joints including:
 - Cap Seal
 - Loading Arm
 - O-Ring
 - Split Flange
 - V-Ring



Conveyor Belting & Accessories

Heavyweight Belting

- Elevator Belts / Buckets
- Feeder Belts / Sidewall Belts
- Specialty Belting Products
- Fabric/Steel Cable Construction

Lightweight Belting

- Thermoplastics
- Monofilaments
- Urethane/PVC
- Rough Top /Incline Profiles
- Cleats
- V-guides
- Cleated / Profile Belting

Conveyor Belt Accessories, Including:

- Idlers
- Pulleys
- Belt Cleaners
- Lagging
- Mechanical fasteners
- Skirtboard / Wiper Rubber
- Impact and slider beds
- Chute liners
- Safety cages and doors
- Cold bond cements and repair kits
- Dust Suppression Systems

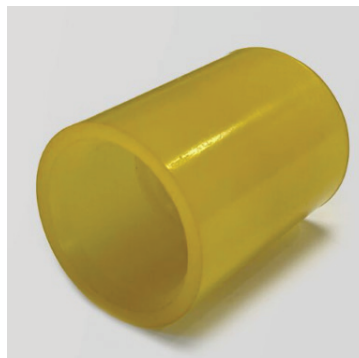


Polyurethane Pipe and Fittings

These custom urethane pipes and fittings are made from a specially formulated polyurethane that is an extremely durable and versatile material. This solution can be especially beneficial in your potash gravity feed lines by limiting replacement costs and lowering your overall total cost of ownership.

Benefits include:

- Handling flexibility & ease of installation: quick & simple assembly due to polyurethane's light weight
- Chemical resistance: unaffected by contact with most chemicals and capable of working in both caustic (10ph) and acidic (5ph) environments
- Abrasion resistance: rated 10 times better than carbon steel and 15 times better than polyethylene
- Less material buildup: a low coefficient of friction equates to cleaner pipe walls
- Translucent design: blockages readily seen for easier cleanout
- Conformation with schedule 80 pipe dimensions: matches bolt holes, diameters, etc. of steel pipe
- Greater wall thickness: extensive durability and extended life
- Coupling built into finished part: less labor and smaller on-hand supply needed



Hose Management Program

LGG Industrial offers a complete hose management program, including on-site testing and recertification for asset management systems. Hose management helps ensure that hoses are safe for employees and reduce downtime.

Our Service Offering:

- On-Site Hose Audits
- Testing and Re-Certification (Reclamation)
 - Off-Site and On-Site Hose Testing
- Asset Tracking and Management System
- Education and Continuous Improvement Training



In the last
five years, we have
documented over
\$11 million

in accepted savings to
our customers through
our hose management
programs

Total Trace OEM Program

TOTAL TRACE

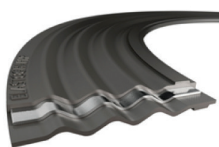
OEM Program

- LGG Industrial's Hose Fabrication Process
- Cutting-edge production control for unmatched consistency
- MES (Manufacturing Execution System)-powered, end-to-end production tracking
- Each hose is individually serialized for traceability
- Fittings and hoses are scanned for 100% component accuracy
- Comprehensive batch traceability for all hose components



Gasket Products

Metal Gaskets



Corrugated Metal Gaskets

Style: Elastagraph

Elastagraph pipe flange gaskets are specifically engineered for low available load applications where reliability and fugitive emissions reductions are a priority. Elastagraph gaskets are made by molding layers of high purity inhibited grade flexible graphite at varying density and thickness over a corrugated metallic core. Elastagraph utilizes a unique corrugation pattern which increases the depth of the groove and the pitch at the peak of the corrugation. It is available in standard ASME/ANSI B16.21 Class 150 and 300 ring & full face with a 316L standard metal insert.

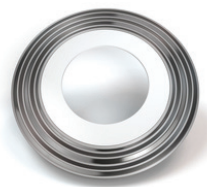


Style: Elastalon

Elastalon is a corrugated metal inserted ePTFE gasket capable of handling a wide variety of applications in Class 150 and 300 lined and metal piping systems. Elastalon is highly resistant to thermal cycling and has an extremely low leak rate fluctuation when cycling occurs. It is designed to have elevated blow out resistance and to reduce minimum seating stress. It is available in standard ASME/ANSI B16.21 Class 150 and 300 ring & full face with a 316L standard metal insert. However, it can be customized for size and design flexibility with special alloy metal inserts and non-standard gasket shapes and sizes.



Gasket Products



Corrugated Metal Gaskets

Style: Elastagraph DS

Elastagraph DS flange gaskets are produced by adding a layer of high purity graphite over a corrugated metal core with an ePTFE seal that is applied to the ID portion of the corrugated core with an 1/8" overlap. The unique corrugated pattern of the core increases the depth of the groove and pitch at the peak of the corrugation improving sealability. The Elastagraph DS gasket can be used in a wide variety of media, i.e. a pH range varying from 0-14 and pressure from vacuum to ASME class 600 and DIN/EN class PN40.



Style: CGG®

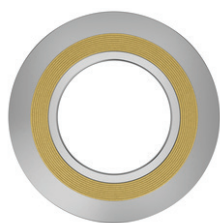
Corrugated Metal Graphite Gaskets uses high performance APX2 graphite for heat exchanger applications. The CGG molds in place by filling in irregularities of the spaces creating a superior seal. It maintains the seal even in harsh environments, including hydrocarbons and steam applications. The gasket is ideal where low bolt loads are present or where high gasket stresses are available. The thin profile is beneficial in areas where flange separation is limited. The heavy core and pitch frequency results in superior recovery and crush resistance in the most demanding applications, an economic solution for emission control. Proven Fire-Safe to API 6FB by Yarmouth Research Lab.



Camprofile Gaskets

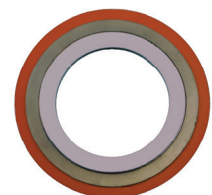
Style: KAG®

Camprofile Gaskets uses high performance APX2 graphite offering the compressibility of a sheet gasket for low sealing stress, the bolt tightness of a spiral wound gasket, along with the handling ease of a solid metal gasket and its resistance to buckling. They are designed for the most difficult sealing environments where performance is critical or sealing stresses are low, and are offered as a high-quality sealing alternative solution for emission control.



LeaderTHERM NXT

LeaderTHERM NXT is resistant to nearly all chemicals and has an 1832 °F continuous operating temperature. It can be used in all types of pipe flanges and equipment and comes in sheet form style 1020 (bonding compound available); facing on Kammpoform gaskets style 1010; and Spiral Wound filler style 1000. Best applications are Exhaust gas systems; Catalytic cracking systems; High temperature gaseous boilers and equipment; NOx containing applications and power generators.



CHEM-ONE

Based on the patented technology platform of our ALKY-ONE® gasket for Hydrofluoric Acid service, the CHEM-ONE gasket gives ID-to-OD flange protection for your most demanding services. The barrier pillow is made from 100% expanded PTFE for ultimate chemical resistance. The integral attachment ring ensures secure barrier pillow retention and boosts compressive load on the overriding pillow – all at reduced stud loads. 100% ePTFE facing on the kamprofile core – loaded to greater seating stress than standard spiral wound gaskets. Kamprofile core metallurgy to meet application requirements. (Monel 400 standard) with a carbon steel outer centering ring. This gasket services from Cryogenic to 500°F.





Spiral-wound Gaskets

Styles: S, SRI, & SR

Spiral-wound Gaskets were developed specifically to handle the severe temperatures and pressures found in the process industries. These gaskets are engineered to be flexible and to recover when confronted with pressure, temperature fluctuations, bolt stress, relaxation and creep. These gaskets can be used with almost every known corrosive and toxic media. Spiral-wound Gaskets with an inner ring prevent inward buckling of the winding from entering the process stream.



Style: HDLE (High Density Low Emission) Gasket

This proven design includes specific pressure controls to be used while winding the sealing element in order to obtain the ideal winding density, APX-2 graphite to lower oxidation rates and wider graphite material that extends above the metal winding to provide a long-term seal at lower gasket stresses, (Seals 80 times tighter than spiral wounds), the HDLE is an excellent choice for emission control.



Double Jacketed Gaskets

Double Jacketed Gaskets offer greater compressibility and resilience than a solid metal gasket due to the enclosed soft filler. The two-piece metal construction also provides extra rigidity, allowing for large diameters. Double Jacketed Gaskets are used on boiler and heat exchanger applications when ample bolting is available to correctly seat the gasket. They are designed for high-pressure and temperature applications.

Soft Gaskets



Biaxially Oriented PTFE Sheet with Silica Filler

Clipperlon Style: 2100

Biaxially oriented gaskets make for a less porous gasket and enhanced compressibility. Particularly suitable for use with strong acids (except hydrofluoric acid) and alkalis. Other applications include solvents, fuels, water, steam and chlorine.



Biaxially Oriented PTFE Sheet with Hollow Glass Microspheres

Clipperlon Style: 2110

Biaxially Oriented gaskets make for a less porous gasket and enhanced compressibility. This process also allows us to manufacture a gasket with increased bolt load retention, reduced creep and excellent sealability at low stress. They are specially designed for use in low bolt loaded constructions, and therefore, are extremely suitable for glass, ceramics and plastic lined or distorted flanges and even flanges with light surface irregularities.



Biaxially Oriented PTFE Sheet with Barium Sulfate Filler

Clipperlon Style: 2120

Biaxially Oriented gaskets make for a less porous gasket and enhanced compressibility. This process also allows us to manufacture a gasket with increased bolt load retention, reduced creep and excellent sealability at low stress. A general purpose grade for sealing applications across the whole pH-range. Particularly suitable for use with hydrofluoric acid, but not pure hydrogen fluoride. It can be used with alkalis, solvents, fuels, water, steam and chlorine. **This product is approved for use in chlorine service for Service Classes I and IV.**

Gasket Products



Homogeneous expanded PTFE sheet

Clipperlon Style: 2130

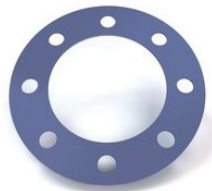
Uses product geometry rather than fillers or binders to address concerns associated with traditional PTFE material. 2130 is designed for oxidizing applications, harsh chemical environments, and areas where contamination is a problem. 2130 is completely chemically inert and is suitable for sealing all chemicals across the pH range with the exception of molten alkali metals and fluorine gas. This gasket achieves very good stability and tightness with good blow-out resistance especially in demanding steel flange applications. The good resistance behavior of the material leads to increased operating safety, even in changing operating conditions.



Expanded/Molded PTFE Ring Gaskets

Style: UPG

GORE Universal Pipe Gasket (Style 800) provides a reliable seal for steel, glass-lined steel and fiber reinforced plastic (FRP) flanges, in the full spectrum of strong acid, alkali, and solvent process media, including the most challenging thermal cycling and elevated temperature applications. This single gasket solution can reduce the process safety and production downtime risks caused by the use of an incorrect gasket material. Highly conformable 100% ePTFE reliably seals irregular surfaces.



Compressed Neoprene/Aramid Fiber Sheet

Style: 976

The 976 is a Neoprene/Aramid fiber compressed gasket sheet made with all the great features of premium gasket materials. A universal grade material designed for Freon refrigerants and high aniline point oils, but is also recommended for applications in ammonia gas, fuels, mild acids, mild alkalis, water etc.



Compressed EPDM Aramid Reinforced Fiber Sheet

Style: 986A

Style 986A is a compressed EPDM Aramid reinforced Fiber sheet. The combination of Aramid fibers and EPDM creates a sheet material that withstands the effects of aggressive acids and alkalies with minimum weight loss. In addition, the EPDM handles steam up to 400°F. 986A can be used in such demanding chemicals as caustics, dilute acids, brake fluids, silicone fluids, ketones, and phosphate esters. This sheet gasket also provides high resistance to weathering, oxygen, and ozone, and is compatible with animal and vegetable oils.



Compressed NBR/Aramid Fiber Sheet

Style: NA-60

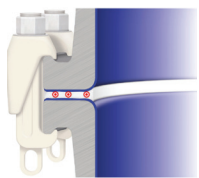
NBR/Aramid fiber is compressed gasket sheet made with all the great features of premium gasket materials without the cost. Nothing is left out, only the best raw materials are used, without compromise. It exhibits a broad chemical resistance, excellent cutability and flexibility. NA-60 is recommended for general service gaskets on all machinery and process piping and equipment.

Sheet Rubber



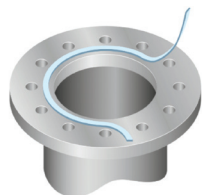
LGG Industrial stocks and fabricates all types of rubber gasketing materials. Whether you need a Fluoroelastomer (Viton®), Neoprene, Nitrile, SBR (usually red rubber), EPDM, Natural (gum rubber) we will supply it. Since rubber requires the lowest loading of all gasket materials, it's ideal for flange designs such as flat faced flange and manway applications or where inadequate fastener loading is present. Temperature range is from -32°F to 500°F and up to 150PSI.

Gasket Tape & Joint Sealant



Style - Gasket Tape

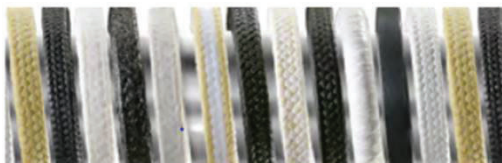
Gasket Tape addresses the challenges of reliably sealing large glass lined steel flanges. Made of 100% expanded PTFE (ePTFE), our gasket tape is chemically inert and highly resistant to creep, cold flow, and clamp-force loss. Its barrier core maintains an extra tight seal even at low loads.



Style - Joint Sealant

Joint Sealant is a time-tested sealing solution for steel flanges with large diameters, rectangular or irregular shapes, and rough or pitted surfaces. When compressed, this soft, conformable cord forms a thin yet strong seal. It can also seal applications where available bolt loads are low.

Braided Packing



We carry the below packing types. Work with your Account Manager to choose which works best for your application:

- Synthetic Fiber
- Carbon/Graphite Fiber
- Flexible Graphite
- PTFE
- Kevlar
- Die-Formed Rings

Gasket Products

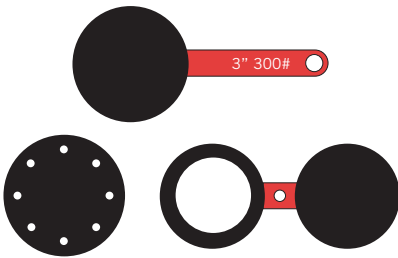
Fasteners and Kitting



LGG Industrial offers a wide variety of studs, bolts, nuts, socket heads, washers, threaded bar, and more in various materials, coating, and sizes. We carry all common materials as well as specialty alloys and coatings.

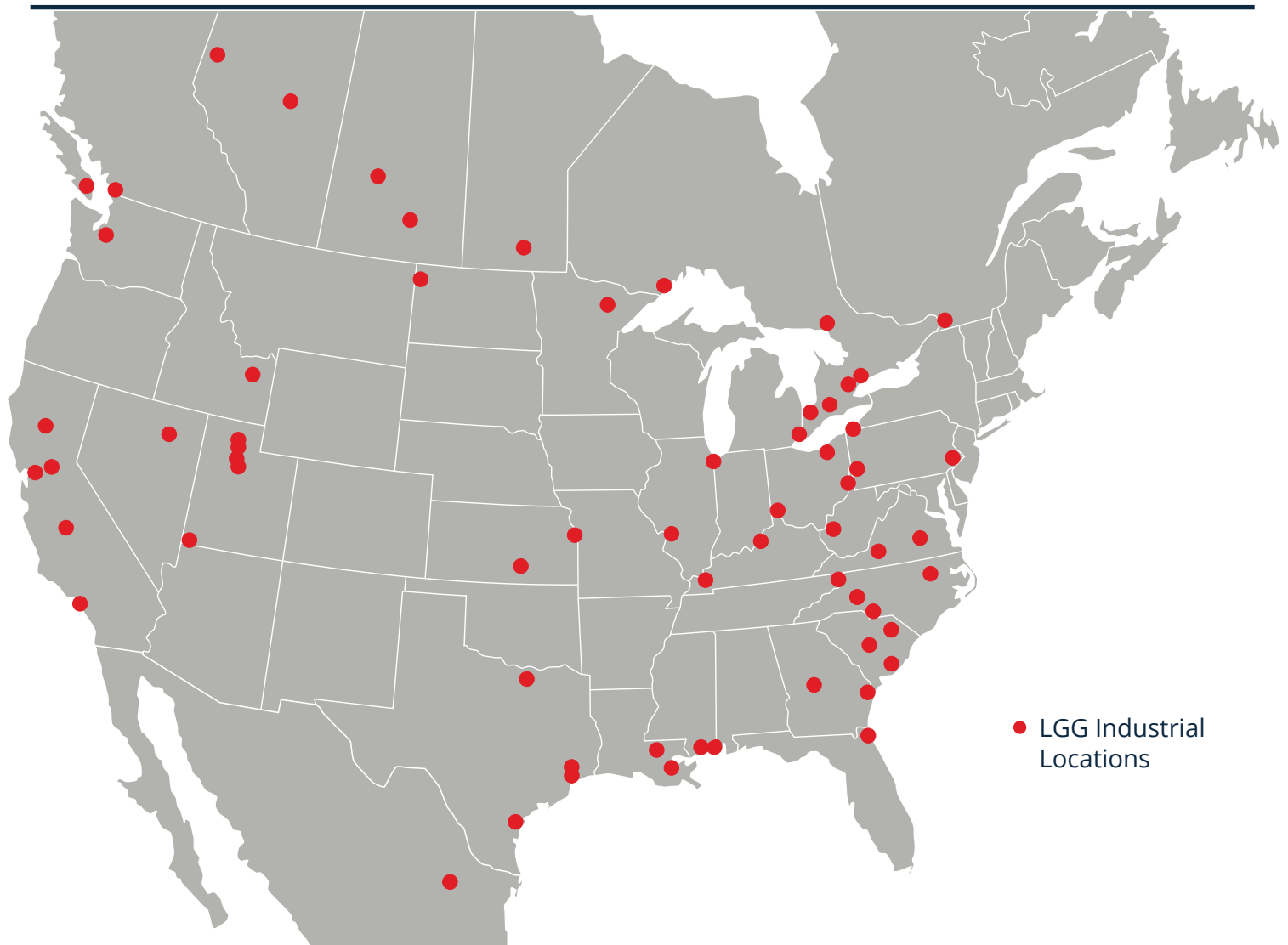
We can kit our fastener and sealing products to enable correct installation for less failures and downtime. Our kits include all products needed for installation and installation instructions to make it easy for employees to replace and install products quickly and correctly.

Blinds



Style: Paddle and Spectacle

For all your isolation and hydro requirements (isolation blinds are not intended for pressurized services or hydrotest). Unless specified, isolation blinds are 1/4" to 3/8" carbon steel. Blinds for hydrotest are available with thickness per ASME and API.



LGG Industrial offers a complete line of products including:

- Fluid Transfer Solutions
- Fluid Power Hose Solutions
- Material Handling Solutions
- Sealing Solutions

LGG Industrial Industries Served:

- | | | |
|-------------------|--------------------|----------------------------|
| • Aggregate | • Mining | • Pulp & Paper |
| • Agriculture | • OEM | • Refining & Petrochemical |
| • Chemical | • Oil & Gas | • Rental |
| • Food & Beverage | • Power Generation | • Tire |
| • Grain | • Primary Metals | |



LGG INDUSTRIAL

lggindustrial.com